

# AURORA SERIES

## Specifications

### CONSTRUCTION

The architecturally shaped housing and door frame are constructed of die cast aluminum. The door frame features a tool-less latch with stainless steel hardware. The flat tempered glass lens is sealed in place and a one-piece door gasket is provided for weather tight protection. ETL listed for wet locations.

### OPTICAL SYSTEM

Made with a state of the art high performance reflectors that use high gloss components to

achieve precise photometric distributions.

### ELECTRICAL SYSTEM

Available 1000W standard metal halide and pulse-start metal halide. Comes standard with a 4KV pulse rated mogul base socket. Each 60HZ CWA multi-tap or 480V ballast is pre-wired and installed for convenience. 50HZ ballast available upon request.

quad 70° and 90° Davit and 7° Up Tilt Straight Arms. Additional mounting options may be available for custom applications.

### FINISH

A Super Durable Polyester powder coat finish is electrostatically applied in our state of the art paint facility. Standard colors available: Black, Bronze, US Green, White. Custom colors available upon request.

### MOUNTING

Standard mounting options include single, twin 70° and 180°,

## Ordering Information

Example: **AURORA1BP1-PS-BK** (1000W Metal Halide, Multi-Tap, Pulse-Start, Black)

### AURORA1

Series	Reflector	Wattage	Voltage	Pulse-Start	Finish
<b>AURORA1</b> Designer Sports Shoebox	<b>B</b> Type IV Forward Throw	<b>P</b> 1000 MH	<b>1</b> Multi-Tap <sup>1,2</sup> <b>2</b> 480V	<b>PS</b> Pulse-Start	<b>BK</b> Black <b>BZ</b> Bronze <b>GR</b> US Green <b>WH</b> White <b>SP</b> Special

## Accessories (Order Separately)

### CCS 7° TILT ARMS

- Single Straight Arm with 7° Up Tilt  
**CCSVSA7-190**  
EPA: 2.06
- Double Straight Arm at 70° with 7° Up Tilt  
**CCSVSA7-270**  
EPA: 3.36
- Double Straight Arm at 180° with 7° Up Tilt  
**CCSVSA7-2180**  
EPA: 3.36
- Quad Straight Arm at 70° with 7° Up Tilt  
**CCSVSA7-470**  
Quad Straight Arm at 90° with 7° Up Tilt  
**CCSVSA7-490**  
EPA: 4.66



### SHIELDS

Back Side Shield  
**S143**

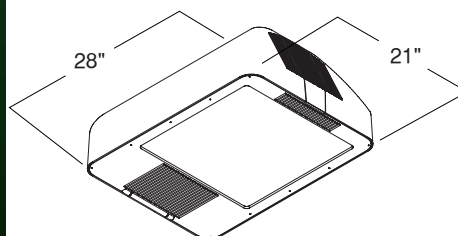
### NOTES

- Multi-Tap Ballast is 120V, 208V, 240V, & 277V.
- Fixture is pre-wired for 240V. Alternate voltages will require field adjustment.

## Designer Shoebox



## Dimensions

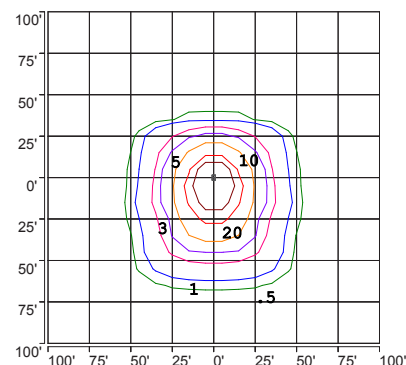


Fixture EPA (ft.<sup>2</sup>) - 2.00  
Approx. Weight - 70 lbs.

## EPA's (ft.<sup>2</sup>)

Fixture Configuration	EPA's
	7° CCS Arm
1 @ 90°	<b>4.06</b>
2 @ 180°	<b>7.36</b>
2 @ 90° or 2 @ 70°	<b>7.00</b>
4 @ 90° or 4 @ 70°	<b>11.48</b>

## Photometry



ISOFOOTCANDLE PLOT:  
AURORA 1000W MH CENTER  
COURT SERIES  
23° AFG - 0 DEGREE TILT

CENTER COURT