

Nexxfield

Nexxfield products were subjected to numerous performance and wear tests both in laboratories and in everyday use, thus surpassing existing industry standards.

- ✓ Effective regardless of the season.
- ✓ Fiber configuration ensuring long-term performance & safety.
- ✓ A unique underlayment.
- ✓ A product designed for safe play.

POWERED BY
INNOVATION

KOMBI PRO

4TH GENERATION TECHNOLOGY
SYNTHETIC TURF SYSTEM with
GRIPDRESS™ & NexxPAD™ SHOCK PAD

Powered by:

NexxPAD™
ENGINEERED WITH ATHLETES IN MIND

CONCEPT
TECHNICAL GROUP

VELCRO

BONAR YARNS

POWERED BY
cool grass
ECO-FRIENDLY INFILL

GRIP ZONE

GRIPDRESS™

NexxFILL™
ECO-FRIENDLY INFILL

NEXXFIELD
EXCEEDS EXPECTATIONS

>> WWW.NEXXFIELD.COM

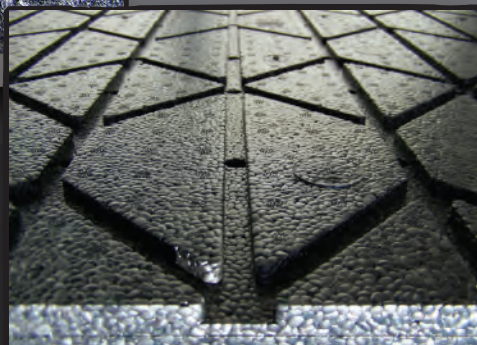
NEXXFIELD
EXCEEDS EXPECTATIONS

KOMBI PRO

>> We've created a solution with players in mind.

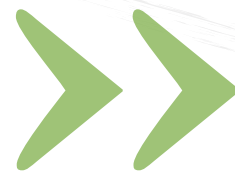
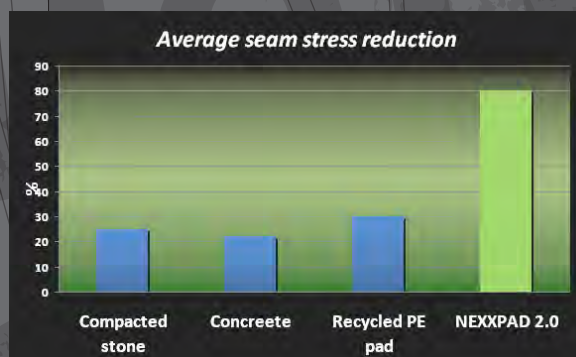
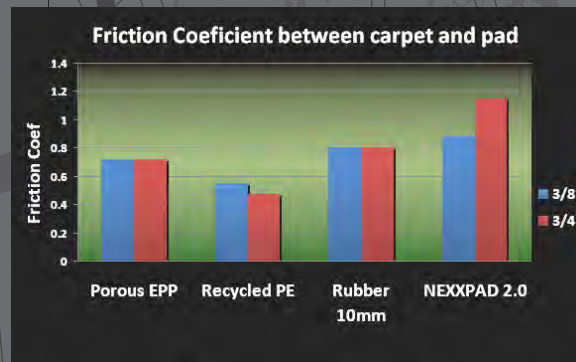


>> Our NexxPAD™ under layer, with its AER™ technology (Adapted Energy Restitution), will provide superior shock absorbcency with minimal energy loss for a stable surface.



>> Artificial turf systems are subject to high shear force applied by athletes during rapid changes of direction and scrum. Systems with less or no infill need high friction with the base or the pad to prevent carpet movements. The Kombi and X-Gen systems are designed to work with NexxPAD™ and its C.A.S technology to provide higher carpet stability than just a normal 100% rubber infill laid on compact stone and other regular system configurations. The Carpet Anti-Slip technology is patent pending and is exclusive to NEXXPAD™.

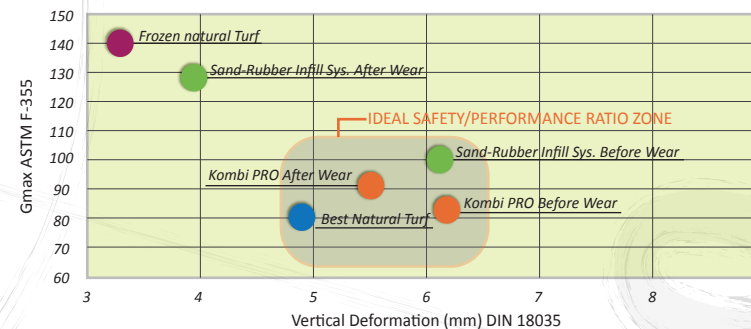
During scrum an other brutal actions imposed on the sport surface, some shear stresses are directly transferred to seams of the artificial turf and can damage it. By drastically increasing and virtually "locking" the turf on the NEXXPAD™, shear stresses are absorbed by the NEXXPAD™ and automatically reduced on the seams.



The Kombi PRO™ is a hybrid system providing long term performance and safety using only a thin layer of GripDress™ infill along with our proprietary NexxPAD™ shock pad under-layer which will provide superior shock absorbcency with minimal energy loss for a stable surface.

PROVEN SHOCK ABSORBCENCY = PROVEN SAFETY

Football players usually like fast and firm surfaces which are normally not adequate for safety; *preventing injuries must remain crucial*. As tackle, jumping and diving are part and parcel of the football game, it is important for a field surface to have great shock absorption characteristics. The shock absorbcency level is measured with the ASTM Gmax testing method. As is demonstrated in the chart below, the Kombi PRO system is situated in the ideal safety/performance ratio zone.



>> Lowest Gmax rating ensures head safety during an impact with the ground and can help prevent traumas resulting from major head impacts.

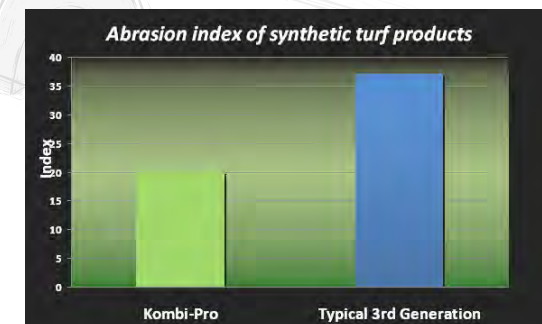


THE LOWER THE INDEX, THE SOFTER THE SURFACE

A common complaint of first to third generation synthetic turf was the abrasiveness of the surface together with its tendency to produce friction burns when a player, for example, made a sliding tackle on the surface.

In order to test the abrasiveness level of a surface, a special silicone elastomer that simulates natural skin is rubbed over the surface at speed. According to the ASTM testing method:

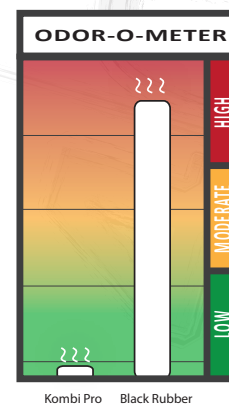
The Lower the Index... the softer the Surface



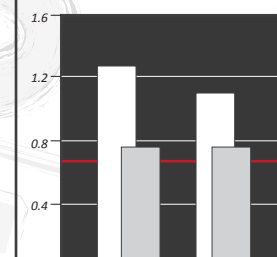
PLAYER'S COMFORT: REDUCE SURFACE TEMPERATURE

The Kombi PRO System utilizes the revolutionary Grip Dress or the exclusive TPE Nexxfill therefore eliminating all the disadvantages normally encountered with regular black rubber infill.

- ✓ No VOC
- ✓ 100 % heavy metal free



PLAYERS NEED SUFFICIENT TRACTION



* To avoid injuries caused by drastic loss of grip, the static traction coefficient should be higher than 0,7.

□ Static □ Dynamic

A football player needs to both accelerate from a standing start and be able to stop quickly equally as well. The shoe has to gain sufficient grip on the surface to allow the propulsive forces of the take-off to be transmitted to the surface to allow the player to accelerate from standing. Similarly the player must gain sufficient grip from the surface to enable him to stop quickly as well.



>> The quality of an athletic field's playing surface can be defined as the suitability of a surface for a particular sport as measured in terms of interactions between the playing surface and the athlete.

Football is one of the most physical sports. The surface on which it is played interacts in two ways with the athletes: through them falling on the surface and/or through player to shoe to surface interactions. An adequate football surface should provide a level of traction that benefits the player's actions without causing excessive stress to joints or ligaments.

With several years of research and development, we have transferred this knowledge to the artificial turf world. The Nexxfield team has put a lot of time and effort in developing its Kombi PRO Artificial Turf System. Extensive biomechanical and mechanical investigations and simulations are at the root of this system, which combines firmness, fastness, speed and safety.

Kombi PRO... A state-of-the-art solution conceived expressly for Football Players!

